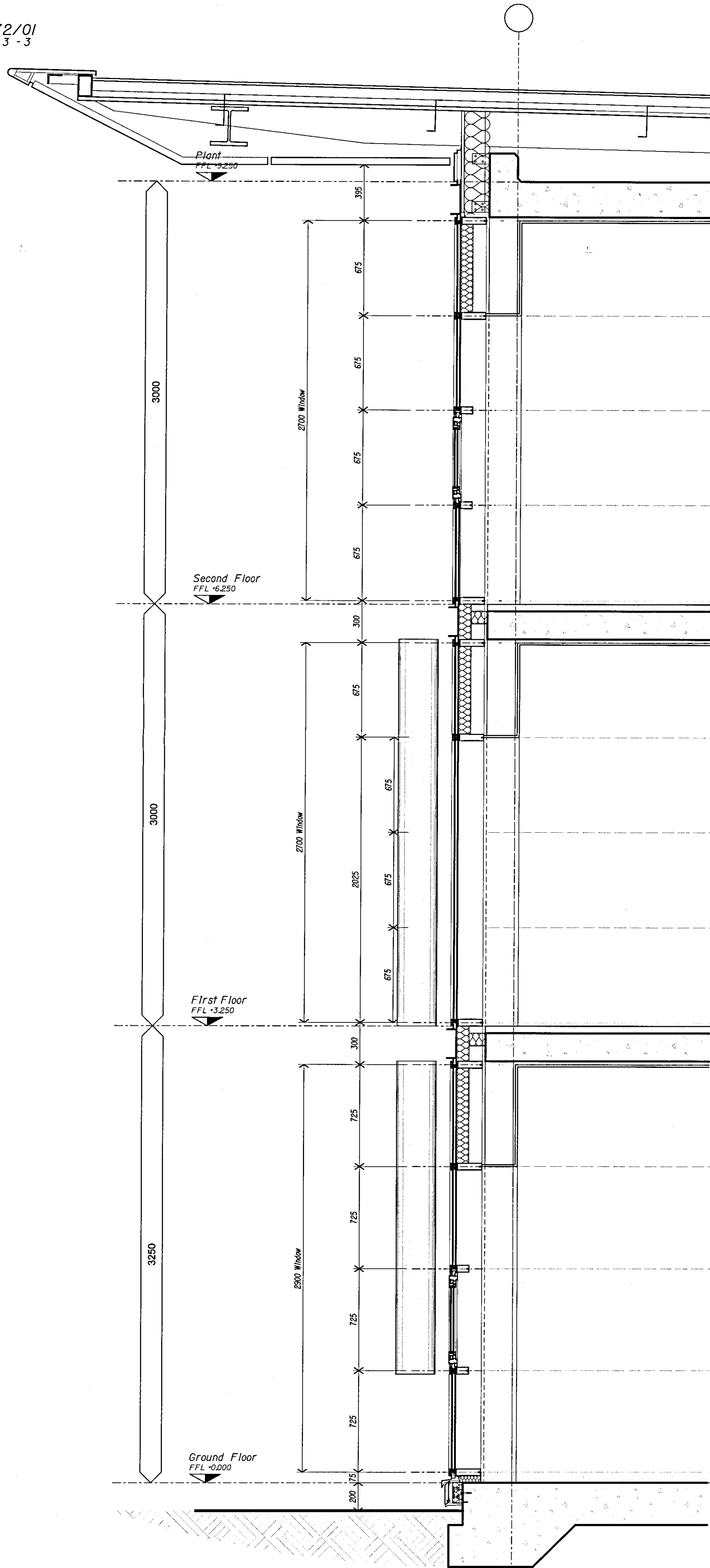
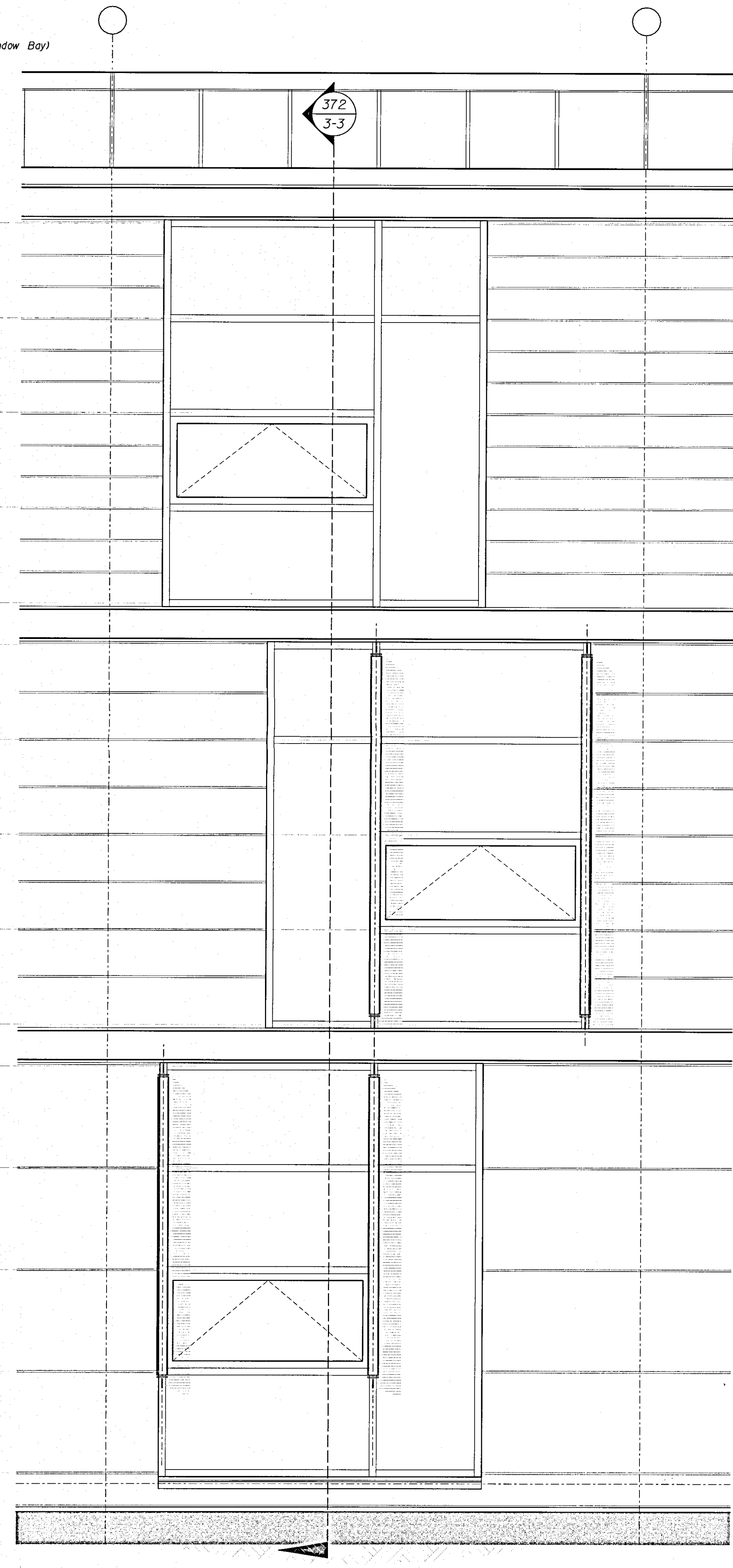


09003-372/01
Hotel Section 3 - 3
Scale: 1:20

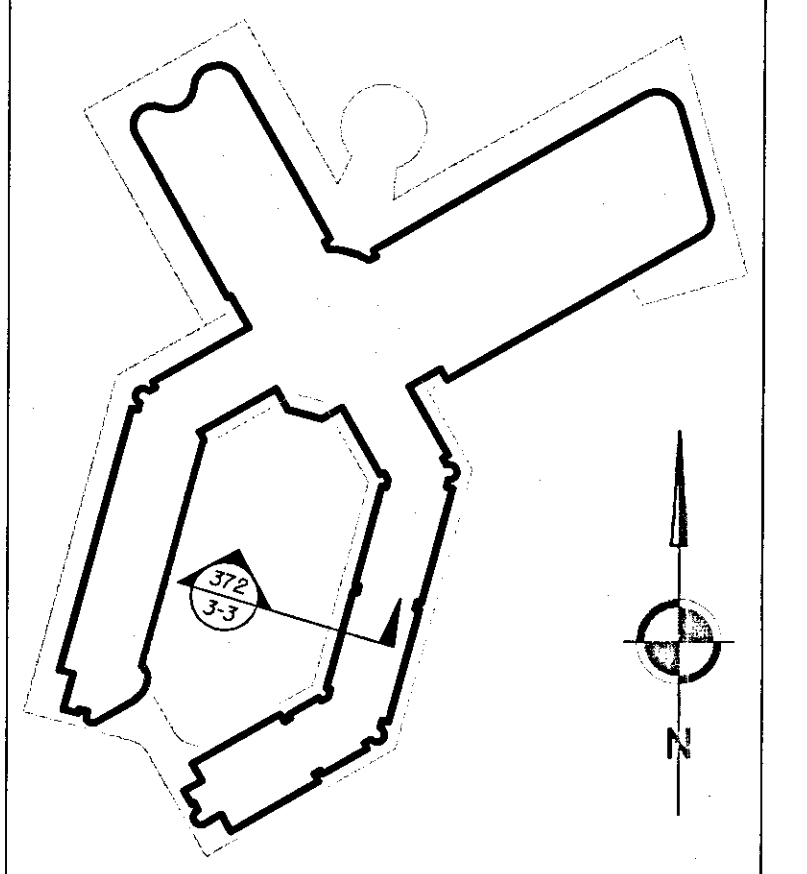


09003-372/02
Hotel Part Elevation (Window Bay)
Scale: 1:20



Notes
1. To be read with CDM Risk Register
2. Do not scale, check this is the latest version, if in doubt, ask see drawing issue log for issue history

09003-372/03
Hotel Section Location Plan
Scale: NTS



RECEIVED
24 FEB 2010
TIME:

P/10/00255

A	ISSUED FOR PLANNING	2010/02/12	MC	SG
-	Draft Issue For Comments	2010/01/29	MC	SG
Rev	Notes	Date	By	Review

redboxarchitecture

Red Box Architecture, 51 Nicholas Chase, Newcastle upon Tyne, NE1 1RJ
 T: +44 (0)191 245 7105, F: +44 (0)191 245 7111, mail@redboxdesign.com, www.redboxdesign.com
 Red Box Design Group Ltd trading as Red Box Architecture
 redboxdesigngroup : redboxinteriors : redboxgallery

THE NATIONAL FOOTBALL CENTRE ST GEORGE'S PARK			
PROPOSED HOTEL Section 3-3			
See Dwg	09 003	372	A
A1	PLANNING		

copyright © Red Box Design Group Ltd 2010